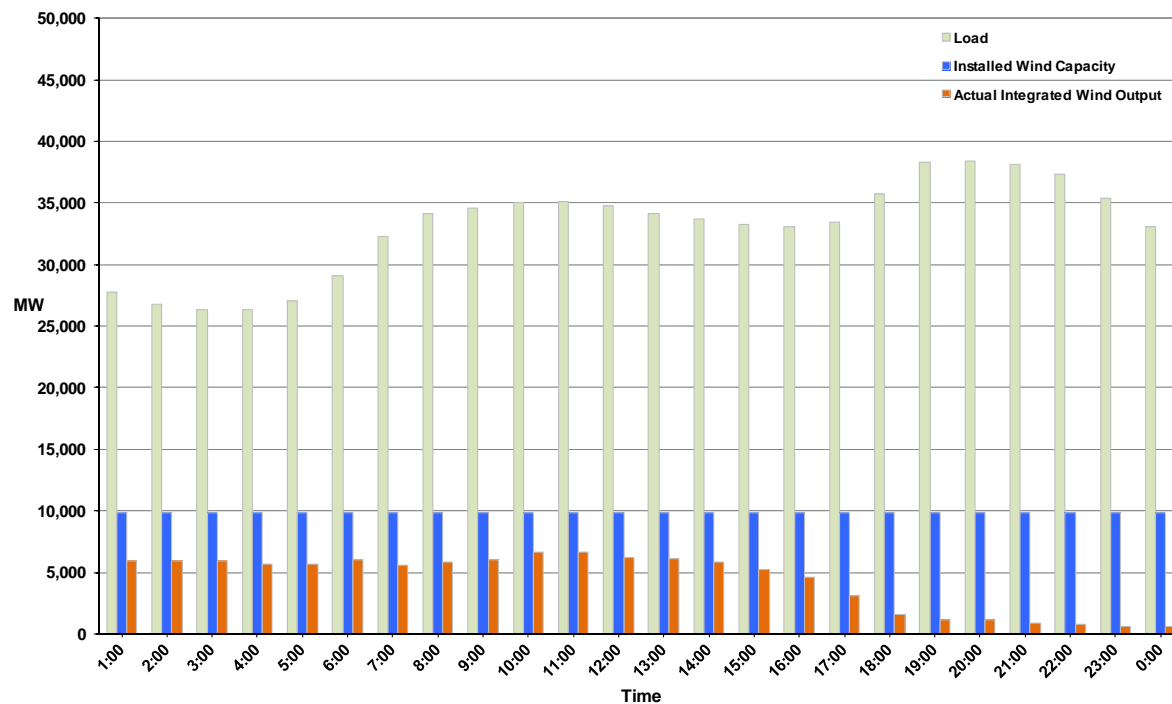




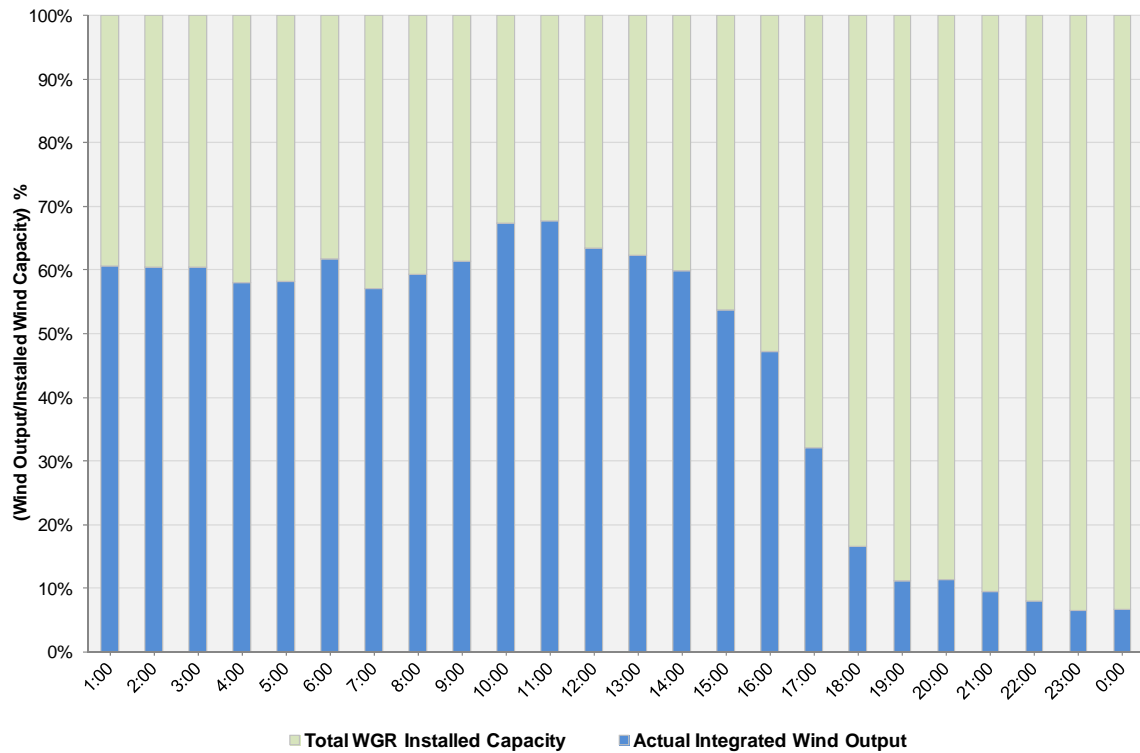
## ERCOT Grid Operations Wind Integration Report: 12/20/11

Peak Load	<b>38,399 MW</b>
Load Peak Hour (HE)	<b>20</b>
Wind over Peak	<b>1,119 MW</b>
Wind Record 10/07/11	<b>7,400 MW</b>
Max Wind Value	<b>6,868 MW</b>
Wind Peak Time	<b>10:59</b>
Wind Integration %	<b>19.56%</b>

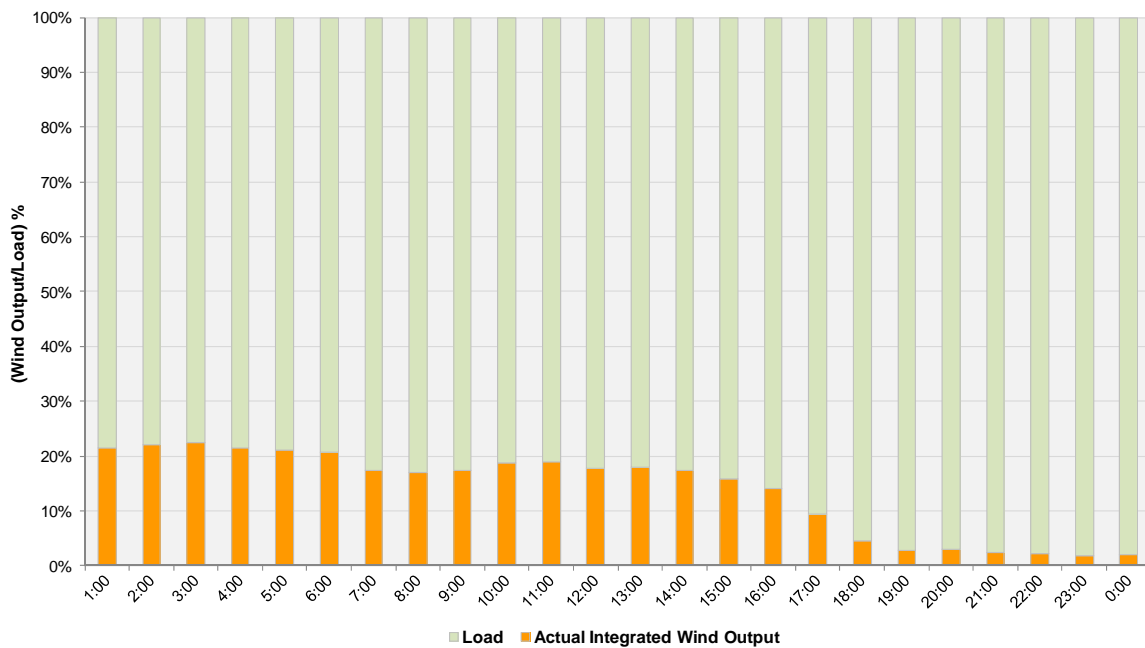
Hourly Average Actual Load vs. Actual Wind Output  
12-20-2011



**Actual Wind Output as a Percentage of the Total Installed Wind Capacity**  
**12-20-2011**



**Actual Wind Output as a Percentage of the ERCOT Load**  
**12-20-2011**



ERCOT Load vs. Actual Wind Output 12/13/2011 - 12/20/2011

